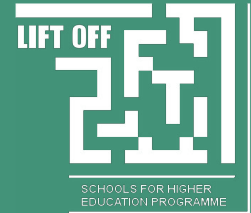


Community Education Subject guide



Community Education Study

Community Education or Community Learning and Development (CLD) is a profession that encompasses youth work, adult education and community development.

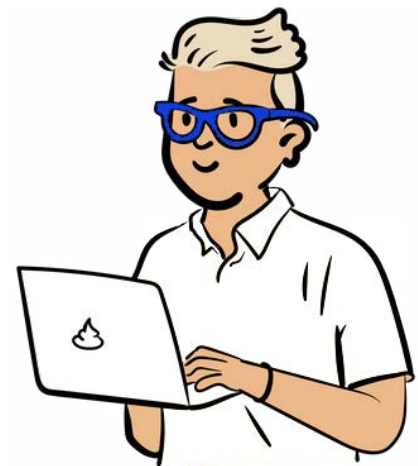
Studying Community Education is a mixture of learning in university and on placement. Indeed, 40% of your time on a degree programme is spent on placement – where you could be in a wide variety of organisations such as youth work, adult education, community development, housing agencies, local authorities, third sector, NGO's and much more.

Learning in university will see you engage with a wide range of subjects – some of the primary areas include educational theory (with a focus on informal education methods), sociology, social policy, politics and learning on topics related to social justice. Students are encouraged to learn from each other and develop their skills working in groups.

Courses are centred on how to work in communities to enable the people within them to empower themselves to live richer lives. Curriculums are designed to support students to critically reflect on a wide range of social issues and social theory to better prepare them to tackle justice-oriented work in the field.

Options

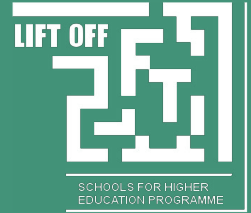
- There are many avenues into Community Education
- Many Higher Education Institutions offer articulation pathways, where they recognise previous learning at college or in the workplace so you can enter university at year 2 or year 3.
- College's offer courses at Higher National Certificate or Diploma (HNC/HND) level in areas such as Working with Communities or Social Services.



General Advice

The best advice for additional steps to study this subject is to gain experience in the field. This might involve volunteering or looking for part-time work in a youth work agency, adult education venue or in a community development organisation. Organisations in this area tend to be very welcoming of anyone looking to volunteer and gain experience so it is worth enquiring. Contact your **local volunteering agency** to find out current options.

Community Education Subject guide



Resource

Here are some good resources that can help you to get started:

- **The CLD Standards Council** are the professional body and membership organisation for qualified staff who work or volunteer in Community Learning and Development.
- **This video** helps explain what Community Education/CLD is and a bit more about the degree programme at the University of Dundee
- **The CLD Talks Podcast** is a regular series that has practitioners and other guests discussing their work. This really illustrates the wide range of roles people can undertake with a qualification in this area.

Checklist

Get ahead and prepare yourself for future Community Education study and applications:

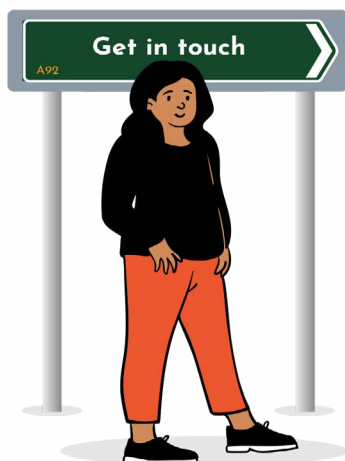
Check entry requirements carefully!

Organise work experience in a community setting.

Visit an open day to find out more about specific courses and institutions.

Familiarise yourself with social issues- the impact of poverty, marginalisation & discrimination.

Find out more about the practice of Informal Education- see **infed** as an example



@LIFTOFF.SHEP



@LIFT.OFF.programme



@LIFTOFF2tweet



www.lift-off.org.uk



lift.off@abertay.ac.uk